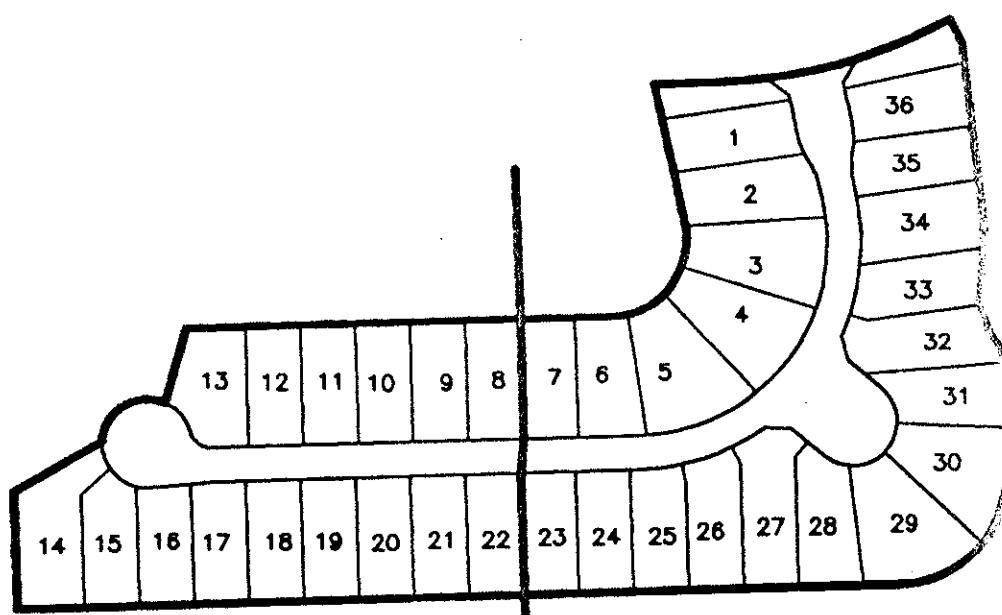


ADDISON RESERVE PARCEL SIXTEEN

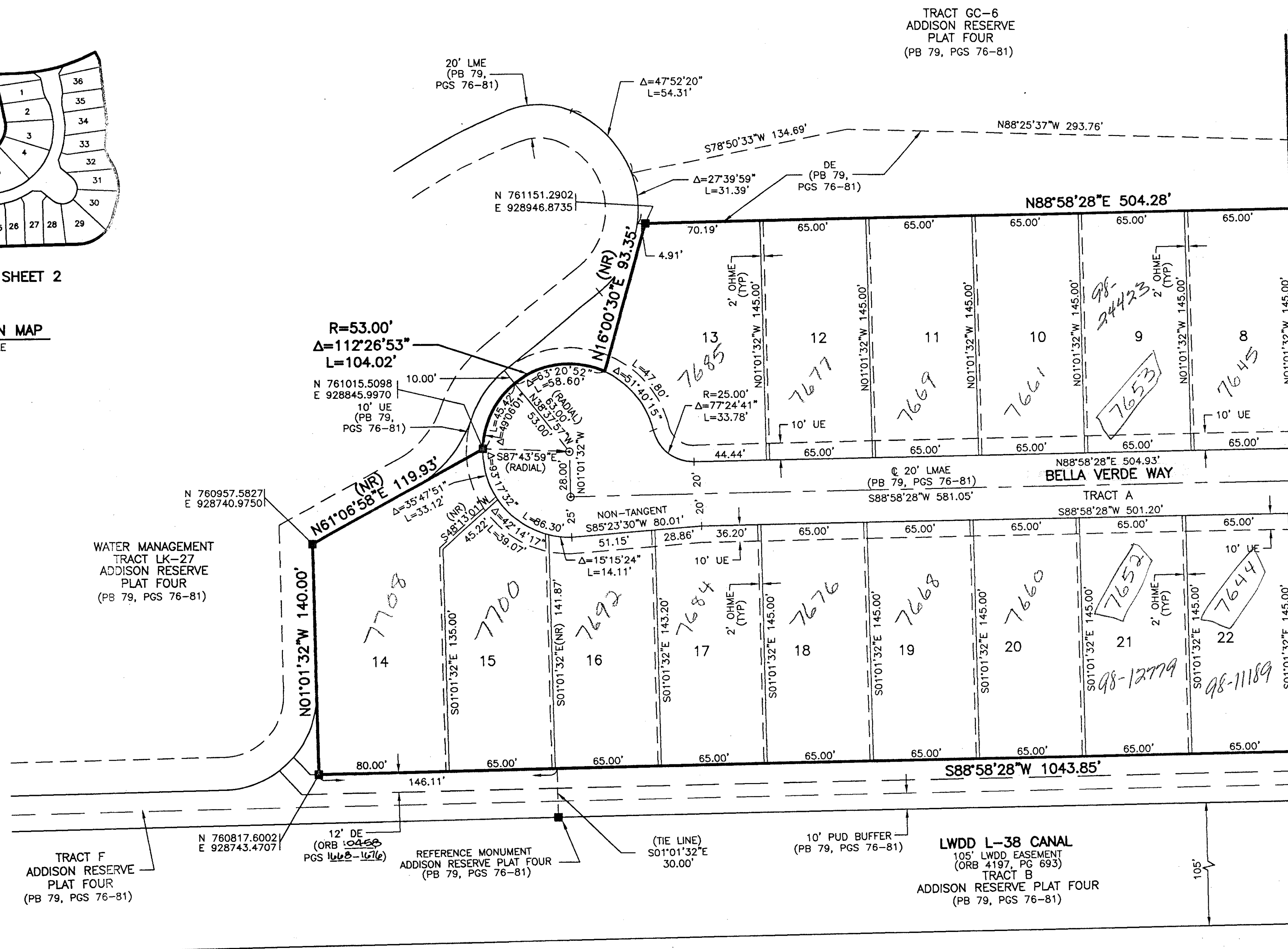
PART OF GLENEAGLES/POLO CLUB WEST P.U.D.
BEING A REPLAT OF TRACT 16
"ADDISON RESERVE PLAT FOUR"
(P.B. 79, PGS. 76-81)

SITUATE IN SECTION 28, TOWNSHIP 46 SOUTH, RANGE 42 EAST
PALM BEACH COUNTY, FLORIDA
MARCH, 1998 SHEET 3 OF 3



SHEET 3 SHEET 2

SHEET LOCATION MAP
NOT TO SCALE



0230-028
RET. 80-215 (T)
REC. #0001
5/3/3/K

- NOTES:
1. THE COORDINATES SHOWN HEREON ARE STATE PLANE GRID COORDINATES ACCORDING TO THE TRANSVERSE MERCATOR PROJECTION OF THE FLORIDA EAST ZONE, N.A.D. 83, PER THE 1990 ADJUSTMENT.
 2. THE LINEAR DIMENSIONS SHOWN HEREON ARE GROUND DISTANCES IN U.S. FEET AND DECIMAL PARTS THEREOF.
 3. THE GROUND DISTANCE TO GRID DISTANCE SCALE FACTOR IS 1.0000338 (GROUND DISTANCE X SCALE FACTOR = GRID DISTANCE).
 4. ALL LINES WHICH INTERSECT CURVES ARE RADIAL TO THOSE CURVES UNLESS OTHERWISE NOTED.

LEGEND

BE	BUFFER EASEMENT
Δ	CENTRAL (DELTA) ANGLE
DE	DRAINAGE EASEMENT
FPL	FLORIDA POWER & LIGHT
L	ARC LENGTH
LAE	LIMITED ACCESS EASEMENT
LE	LANDSCAPE EASEMENT
LME	LAKE MAINTENANCE EASEMENT
LMAE	LAKE MAINTENANCE ACCESS EASEMENT
LWDD	LAKE WORTH DRAINAGE DISTRICT
(NR)	NON-RADIAL
OHME	OVERHANG AND MAINTENANCE EASEMENT
ORB	OFFICIAL RECORD BOOK
PB	PLAT BOOK
PG(S)	PAGE(S)
PUD	PLANNED UNIT DEVELOPMENT
R	RADIUS
(TYP)	TYPICAL
UE	UTILITY EASEMENT
□	PERMANENT REFERENCE MONUMENT
○	FOUND PLS# 4763
■	PERMANENT REFERENCE MONUMENT
□	SET PLS# 4763
○	PERMANENT CONTROL POINT
○	SET PLS# 4763
⊂	CENTERLINE

36

STATE OF FLORIDA
COUNTY OF PALM BEACH
THIS PLAT WAS FILED FOR
RECORD _____ DAY OF _____
AD, 1998 AND DULY RECORDED
IN PLAT BOOK _____ ON PAGES
_____ AND _____
DOROTHY H. WILKEN, CLERK
By: _____, D.C.

CIRCUIT COURT SEAL

MATCH LINE - SEE SHEET 2 OF 3

THIS INSTRUMENT WAS PREPARED BY MARY HANNA CLODFELTER, P.S.M. IN THE OFFICES OF MOCK, ROOS & ASSOCIATES, INC., 5720 CORPORATE WAY, WEST PALM BEACH, FLORIDA 33407.

SCALE: 1" = 40'
P.A. NO.: 94182.18
DATE: MARCH, 1998
DRAWING NO.: 46-42-28-152

MOCK • ROOS
ENGINEERS • SURVEYORS • PLANNERS
5720 Corporate Way, West Palm Beach, Florida 33407
(561) 683-3113, fax 478-7248

**ADDISON RESERVE
PARCEL SIXTEEN**
PART OF GLENEAGLES/POLO CLUB WEST P.U.D.
BEING A REPLAT OF TRACT 16
"ADDISON RESERVE PLAT FOUR"
(P.B. 79, PGS. 76-81)
SITUATE IN SECTION 28, TOWNSHIP 46 SOUTH, RANGE 42 EAST
PALM BEACH COUNTY, FLORIDA

SHEET 3 OF 3

83/36

0230-028

Parcel 16
REV 05-26-98
ADDISON RESERVE
OR 80-215
PLANNED UNIT DEVELOPMENT
ADDISON RESERVE PLAT FOUR
Club West
478

REV: 05-26-98
CAD FILE:
STW/KAC/UT/ADDIRP36